

LINEAR AIR TRACK – Tube assembly kit 2M or 2.5M long. MF0132-001

Kit parts:

IDENTIFICATION & QUANTITIES OF COMPONENTS:

For 2M or 2.5M long Air Track Tubes:

COMPONENT	2.0M unit	2.5M unit	IEC Catalogue No:
AIR TUBES WITH SEALS:			
Air tube, 2.0m wkg length	1x		MF0107-001
Air tube, 2.5m wkg length		1x	MF0105-001
AIR TRACK TUBE KIT, standard components. MF0132-001			
KIT PARTS: for assembling air tube			
Tube end moulding (fitted to Tube)	2x	already fitted to tube.	PA0130-003A
'O' ring seal & 3x screws	Each	with 3 screws & 'O' ring seal	
End plug for track	1x	closes off end of tube	PA0130-040A
Tape measure, fibreglass	1x	16mm wide, fits along track	PA0130-022A
Feet	3x	black moulding	PA0130-006A
Mounting screw for levelling foot	6x	steel screw	PA0130-008A
Square nut for levelling foot	6x	square aluminium nut	PA0130-028
Metal brace for lateral feet	1x	fits between tube and lateral feet	PA0130-009
Level adjusting screw	3x	with plastic head	PA0130-012A
Plastic lock nut	3x	plastic nut	PA0130-012B
Instruction sheet	1x		

MF0132-001 packed



components



Physical size:

Weight: kg

This kit of parts is used to assemble the Linear Air Track. The same kit is used on Air Tracks of all lengths. The 'brace plate' is positioned between the tube and the mouldings to exert a pre-stress on the moulded feet towards the table to stop flexing of the feet upwards.

The 16mm wide tape measure is slid up the slot provided in the Air Track tube. The excess length can be cut off if desired.

Designed and manufactured in Australia by Industrial Equipment and Control Pty Ltd

Distributed by

Scientrific Pty Ltd

ABN 55 056 072 694

PO Box 420 Yamba NSW 2464
Phone (02) 6645 8111 Fax (02)66458125

**ASSEMBLY PROCEDURE:**

The special plastic ends of the Air Tube are already fitted and sealed to the Air Track tube. To complete the assembly of the Air Track, it is required to fit the feet.

TO ATTACH FEET TO AIR TUBE:

NOTE: The lateral feet are already assembled as a pair with the mounting screws, the square nuts, the adjusting screws and the metal brace. Also, the single foot is fitted with mounting screws, square nuts and adjusting screw.

Lay the air tube upside down. Take the pair of feet assembled back to back with the metal brace plate and 4 screws. Loosen the square nuts and engage them into the slots provided in the underside of the track with each foot pointing sideways. Slide the foot assembly to about 300mm from one end of the track and tighten the screws firmly. See illustration.

Take the third foot and slide the two square aluminium nuts along the slots at the opposite end of the track so that the foot protrudes directly from the end of the track. Be sure the small upstanding rail fits between the two channels to prevent the foot from swinging sideways. Tighten the two screws firmly. Invert the track so it rests on the table on its 3 adjustment screws.

Slide the 2 metric tapes up the grooves provided in each side of the track. If they are 3 metre tapes, cut them with scissors at the length desired.

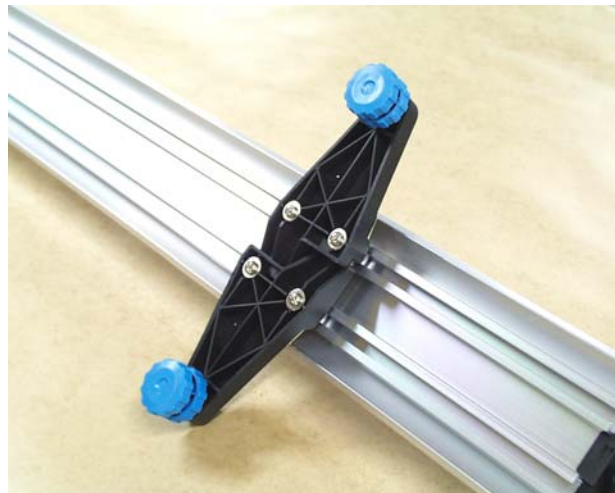
Fit the plastic end plug into one end of the air tube and fit the Air Source hose fitting to the other end of the air tube. The air can be used into either end, but it is normal to apply the air hose into the end closest to the lateral feet.

The air source (air blower) is designed to supply sufficient air to float a fully laden glider on the air tube. In the case of long Air Tracks of around 3.7 metres, the air requirement is much higher and sometimes two air sources would be required (one connected to each end of the air tube).

Single foot fitted to track.



Double feet fitted to track.



Designed and manufactured in Australia by Industrial Equipment and Control Pty Ltd

Distributed by

Scientrific Pty Ltd

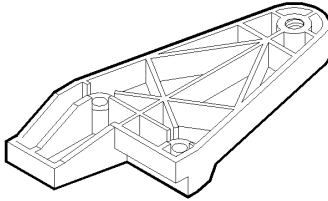
ABN 55 056 072 694

PO Box 420 Yamba NSW 2464

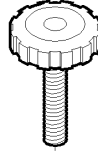
Phone (02) 6645 8111 Fax (02)66458125



PA0130-006A
FOOT



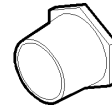
PA0130-012A
FOOT ADJUSTMENT SCREW



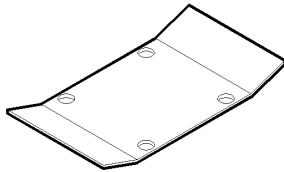
PA0130-012B
LOCK NUT



PA0130-040A
PLASTIC END PLUG



PA0130-009
BRACE FOR LATERAL FEET



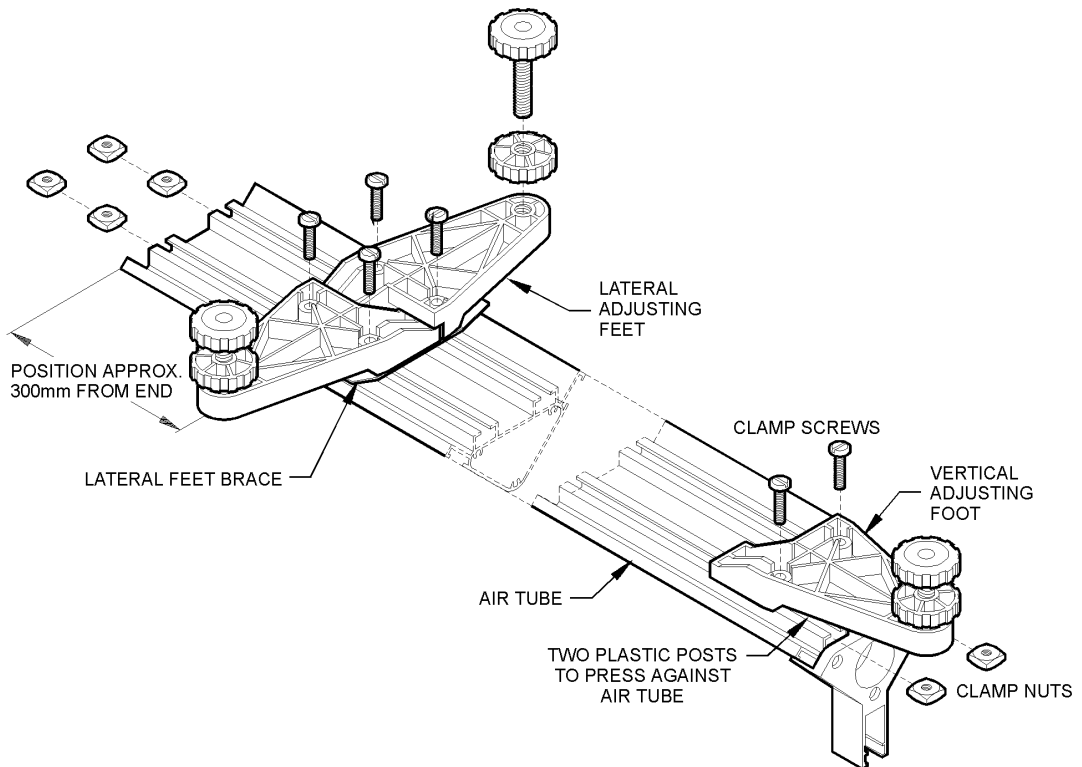
PA0130-022A
TAPE MEASURE



PA0130-008A
FOOT SCREW



PA0130-028
SQUARE NUT
ALUMINIUM



Designed and manufactured in Australia by Industrial Equipment and Control Pty Ltd

Distributed by

Scientrific Pty Ltd

ABN 55 056 072 694

PO Box 420 Yamba NSW 2464
Phone (02) 6645 8111 Fax (02)66458125