

# **SCIENTRIFIC<sup>®</sup>**

## **When Quality and Service Counts<sup>™</sup>**

**ABN 55 056 072 694**  
**PO Box 420 YAMBA NSW 2464**  
**Phone (02) 6645 8111**

[www.scientrific.com.au](http://www.scientrific.com.au)

## **Botany and Zoology Plastomounts**

**as at 6th November 2008**

**DEDICATED FAX ONLY ORDER LINE: 1800 171 805**

Please note that prices do not include GST, freight or insurance and are subject to change.  
Trading Terms are Nett 7 days. Minimum order value \$50. Credit card surcharge 2%.  
Copyright © 2008 Scientrific<sup>®</sup> Pty Ltd

## PLASTOMOUNTS

A range of Australian Botanical and Zoological specimens encased in clear plastic resin. Each Plastomount has an embedded legend naming the individual specimens. Students often don't relate to unfamiliar imported specimens but they will recognise many of these specimens immediately.

### BOTANY



Algal types, typical examples of the 4 main classes of algae.

**1211 \$68.00**

Marine algae, 5 examples of algae found off eastern Australia.

**1212 \$68.00**

Lichens, examples of foliose, crustose & fruticose forms.

**1213 \$60.00**

Fungi types, comparison of 5 forms.

**1214 \$68.00**

Mushroom development, 5 stages of development of the common mushroom.

**1215 \$60.00**

Marchantia life cycle, thallus with gemma cupules, antheridial and archegonial plants & sporophyte.

**1216 \$51.00**

Moss life cycle, sporophytic, antheridial & archegonial plants.

**1218 \$51.00**

Fern life cycle, prothallus, mat. frond, sporophyte, rhizome and fiddlehead.

**1219 \$51.00**

Club Mosses, Isoetes, Lycopodium, Selaginella & Equisetum fruiting bodies.

**1222 \$68.00**

Pinus life cycle, staminate, female cone at pollination, first winter cone, mature cone, seed & twigs.

**1225 \$68.00**

Parasitic plants, comparison of 2 forms.

**1228 \$51.00**

Fruit types, 10 examples showing dehiscent & indehiscent fruits, true and false succulents.

**1230 \$83.00**

Seed dispersal, via wind, water, mechanical, mammals and birds.

**1231 \$83.00**

Root systems, example of tap, modified tap, nodular, fibrous and adventitious roots.

**1233 \$72.00**

Plant reproduction (Vegetative), 7 examples of vegetative reproduction.

**1234 \$80.00**

Plant reproduction (Fruiting), comparison of fruiting mechanisms in algae, fungi, liverworts, moss, ferns, horsetails, gymnosperms and angiosperms.

**1235 \$80.00**

Stem morphology, winter twigs of chestnut, oak, willow, elm, catalpa and maple.

**1236 \$72.00**

Leaf morphology, demonstrates basic venation and leaf types.

**1237 \$64.00**

Monocot. and Dicot. Comparison, leaves showing venation and thin sliced stem sections in t.s. and l.s. for vascular arrangement.

**1238 \$60.00**

Germination in Dicotyledons.

**1240 \$60.00**

Germination in Monocotyledons.

**1241 \$60.00**

Sponge types, examples comparing siliceous and spongin sponges.

**1252 \$51.00**

### ZOOLOGY

Cnidaria types B, examples of Aglaophenia, Velella, Physalia, a true jellyfish and hard coral.

**1255B \$68.00**

Aurelia, stained specimen.

**1256 \$60.00**

Metridium, a typical anemone, in transverse and vertical sections.

**1258 \$60.00**

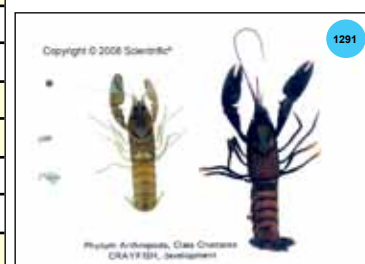


Please note - No two plastomounts will be the same.



## PLASTOMOUNTS - ZOOLOGY CONT'D.

Coral types, 6 skeletal types represented and labelled.
<b>1260 \$68.00</b>
Coral comparison, examples of hard and soft corals.
<b>1260B \$60.00</b>
Fasciola hepatica, sheep liver fluke.
<b>1262 \$51.00</b>
Fasciola and Clonorchis comparison, stained specimens.
<b>1263 \$67.00</b>
Dipylidium caninum, dog tapeworm flattened and stained.
<b>1264 \$67.00</b>
Moniezia expansa, flattened and stained, scolex, mature and gravid segments.
<b>1265B \$60.00</b>
Platyhelminth types A, Planaria, Fasciola, Echinococcus, Moniezia Schistosoma and Dipylidium.
<b>1266 \$83.00</b>
Platyhelminth types B, Planaria, Fasciola and a tapeworm.
<b>1266B \$60.00</b>
Ascaris lumbricoides, male and female specimens.
<b>1267 \$60.00</b>
Ancylostoma caninum, hookworm, male, female & pair in copula.
<b>1268 \$48.00</b>
Nematode types A, examples of hookworm, whipworm, heartworm, Ascaris & dog roundworm.
<b>1269 \$83.00</b>
Nematode types B, Ancylostoma, Haemonchus and Ascaris.
<b>1269B \$51.00</b>
Lingula, a Brachiopod.
<b>1270 \$44.00</b>
Starfish.
<b>1271 \$44.00</b>
Brittlestar.
<b>1272 \$51.00</b>
Holothurian, locomotory, sensory and buccal tube feet extended.
<b>1275 \$60.00</b>
Earthworm life cycle, immatures, sexually mature specimen and cocoon.
<b>1276 \$60.00</b>
Annelid types, examples of leech, earthworm and beachworm.
<b>1276B \$60.00</b>
Leech, large specimen.
<b>1277 \$60.00</b>
Nereis, the sandworm, entire.
<b>1278 \$60.00</b>
Nudibranch.
<b>1280 \$44.00</b>
Oyster, one shell removed.
<b>1282 \$44.00</b>
Bivalve, a scallop, opened.
<b>1283 \$44.00</b>
Mollusc types, 6 specimens representing 4 classes.
<b>1287 \$83.00</b>
Peripatus.
<b>1289 \$60.00</b>
Barnacles, comparison of acorn & goose barnacles.
<b>1290 \$51.00</b>
Crayfish development, 4 stages, egg to adult.
<b>1291 \$76.00</b>



Please note - No two plastomounts will be the same.

## PLASTOMOUNTS - ZOOLOGY CONT'D.



Crayfish appendages, dissected and labelled.

**1292 \$76.00**

Crab types, fiddler, soldier, hermit, rock and mole crabs.

**1293 \$68.00**

Mantis prawn, large specimen.

**1294 \$51.00**

Hermit crab, removed from shell.

**1295 \$64.00**

Fiddler crab, male and female.

**1296 \$60.00**

Swimming crab.

**1297 \$51.00**

Crustacea types, examples of goose and acorn barnacles, hermit and rock crabs and a yabbie.

**1298 \$68.00**

Freshwater Crustacea, examples of Copepoda, Amphipoda, Isopoda, Branchiopoda and Decapoda.

**1298B \$51.00**

Centipede.

**1299 \$51.00**

Millipede.

**1300 \$44.00**

Scorpion.

**1301 \$51.00**

Spider, comparison of sexes.

**1304 \$51.00**

Tick life cycle, 6 stages including a portion of skin with ticks in situ.

**1305 \$51.00**

Arachnid types, examples of spider, scorpion and millipede.

**1306B \$60.00**

Limulus, a king crab.

**1306C \$67.00**

Arthropod types, representatives of crayfish, centipede, grasshopper, millipede and spider.

**1306D \$68.00**

Insect Orders No.1, 10 Orders; Odonata, Orthoptera, Isoptera, Hemiptera, Homoptera, Lepidoptera, Coleoptera, Diptera, Siphonaptera & Hymenoptera.

**1307 \$68.00**

Insect Orders No. 2, 10 Orders; Ephemeroptera, Grylloblattodea, Mantodea, Dermaptera, Plecoptera, Phthiraptera, Megaloptera, Mecoptera, Neuroptera and Trichoptera.

**1308 \$80.00**

Insect larvae, mature larvae of 10 Orders.

**1308B \$67.00**

Orthoptera collection, 4 classes represented.

**1309 \$60.00**

Cockroach life cycle.

**1310 \$68.00**

Cricket life cycle.

**1312 \$51.00**

Grasshopper mouthparts, dissected, cleared and labelled.

**1313 \$44.00**

Grasshopper dissection, shows external morphology, labelled.

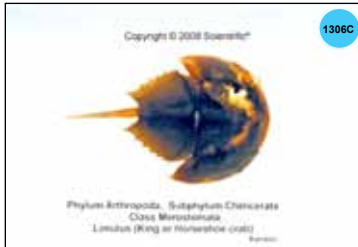
**1314 \$64.00**

Dragonfly life cycle, adult and nymphal stages.

**1315 \$51.00**

Termite castes, one of each caste including a queen and winged reproductive.

**1316 \$67.00**



Please note - No two plastomounts will be the same.

## PLASTOMOUNTS - ZOOLOGY CONT'D.

Termite and Ant comparison, corresponding castes of each Order showing morphological characters.
<b>1317 \$51.00</b>
Neuroptera life cycle, ova, larvae & adult of the antlion fly.
<b>1318 \$51.00</b>
Hemiptera collection, 10 families demonstrating the Homoptera and Heteroptera.
<b>1319 \$67.00</b>
Hemiptera life cycle, Heteropterous.
<b>1320 \$51.00</b>
Cicada life cycle, Homopterous.
<b>1321 \$51.00</b>
Butterfly and Moth comparison.
<b>1322 \$51.00</b>
Lepidoptera life cycle.
<b>1323 \$51.00</b>
Butterfly.
<b>1324 \$48.00</b>
Mosquito life cycle.
<b>1325 \$48.00</b>
Housefly life cycle.
<b>1326 \$48.00</b>
Diptera collection, 8 families represented.
<b>1327 \$67.00</b>
Coleoptera life cycle.
<b>1328 \$51.00</b>
Coleoptera collection, 8 families represented.
<b>1328A \$67.00</b>
Honeybee life cycle.
<b>1329 \$51.00</b>
Honeybee castes, queen, drone and worker castes.
<b>1330 \$51.00</b>
Hymenoptera collection, 4 families represented.
<b>1330B \$67.00</b>
Insect leg adaptations, modifications for running, jumping, grasping, digging and swimming.
<b>1331 \$51.00</b>
Insect antennae, 6 types.
<b>1332 \$51.00</b>
Amphioxus, adult specimen, stained and cleared.
<b>1333 \$48.00</b>
Toad development, 8 stages from egg to adult.
<b>1334 \$67.00</b>
Toad skeleton, an Alizarin stained skeletal transparency.
<b>1335 \$96.00</b>
Toad, preserved specimen.
<b>1336 \$51.00</b>
Lamprey, median longitudinal section of head region.
<b>1340 \$80.00</b>
Lamprey, transverse sections through buccal cavity, pharynx, abdomen and tail.
<b>1340B \$88.00</b>
Trout development, 7 stages from egg to adult showing development of typical bony fish.
<b>1343 \$72.00</b>
Fish, preserved bony fish.
<b>1344 \$51.00</b>
Lizard, non - Australian species.
<b>1345 \$51.00</b>



In the future we will add more Plastomount images.



Please note - No two plastomounts will be the same.

## PLASTOMOUNTS - ZOOLOGY CONT'D.

Sheep brain, median longitudinal section, labelled.
<b>1346 \$88.00</b>
Sheep brain, 6 transverse sections, labelled.
<b>1347 \$104.00</b>
Mouse, adult specimen.
<b>1352 \$51.00</b>
Chick development, 4, 5, 6, 9 & 12 days of development of the embryo.
<b>1356 \$72.00</b>
Chick, showing feather down just before hatching.
<b>1356B \$51.00</b>
Animal Kingdom set, eighteen resin mounts with a total of 49 specimens. Fully labelled from Porifera to Vertebrata covering 12 phyla.
<b>1357 \$888.00</b>
Animal Kingdom set, twenty resin mounts with a total of 79 specimens different from the above but complementing that set as a descriptive collection of the kingdom.
<b>1357B \$1008.00</b>
Plant Kingdom set, ten resin mounts with a total of 42 specimens. Fully labelled from Algae to Angiosperms with the emphasis on reproductive structures.
<b>1358 \$544.00</b>
Insect life cycles, ten life cycles from cricket, dragonfly, neuroptera, hemiptera, homoptera, diptera, mosquito, beetle, butterfly and bee.
<b>1359 \$504.00</b>
Animal Phyla set, six resin mounts containing 2 examples each of Cnidaria, Platyhelminths, Hexapoda, Arthropoda, Echinodermata and Mollusca.
<b>1360 \$192.00</b>
Animal Specimen set, 12 resin mounts containing: Starfish, Centipede, Butterfly, Jellyfish, Mouse, Earthworm, Bivalve, Yabby, Lizard, Fish, Toad & Lamprey plus microscope slides of Hydra and Planaria.
<b>1360B \$480.00</b>

In the future we will add more Plastomount images.

Please note - No two plastomounts will be the same.

Please check with us for current pricing

**SCIENTRIFIC® Pty Ltd**  
When Quality and Service Counts™

Ph. (02) 6645 8111    [www.scientrific.com.au](http://www.scientrific.com.au)    Fax (02) 6645 8125